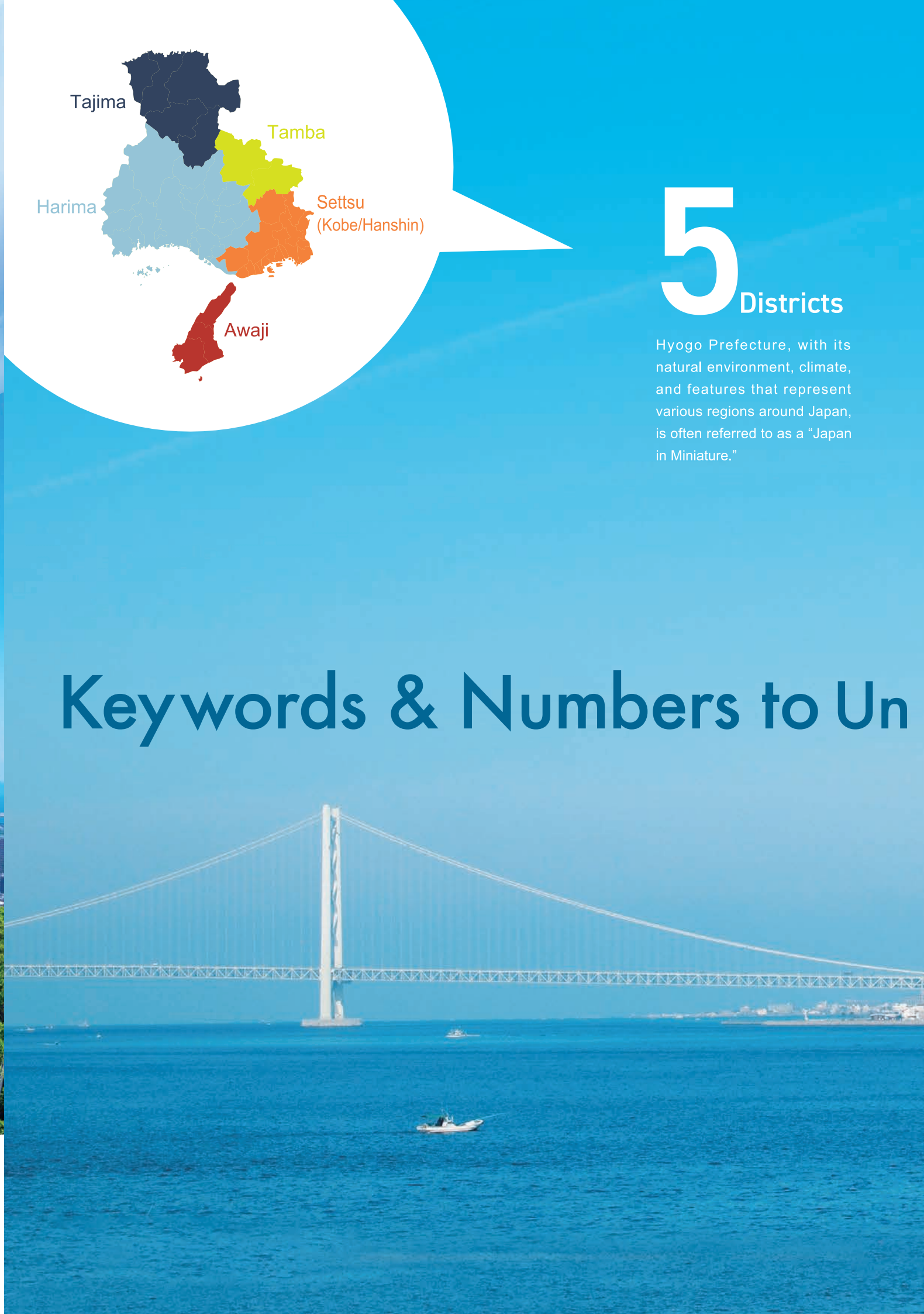




# HYOGO in JAPAN



# 5 Districts

Hyogo Prefecture, with its natural environment, climate, and features that represent various regions around Japan, is often referred to as a "Japan in Miniature."

## Keywords & Numbers to Un



Year Established:

# 1868

Population (as of Oct. 1, 2023):

# 5,369,834

Equivalent to Singapore

Area (as of Oct. 1, 2023):

# 8,400.95 km<sup>2</sup>

Equivalent to Jamaica

Gross Regional Product (March 31, 2021):

# \$ 203,777 million\*

\*1 US Dollar = 106 Japanese yen

Equivalent to Portugal

No. of foreign/foreign-affiliated companies in Hyogo (as of March 31, 2023):

# 88\*

## 4<sup>th</sup> in Japan

\*Survey by Hyogo Prefectural Government

No. of overseas entries from Hyogo-based companies (as of March 31, 2023):

# 1,014\*

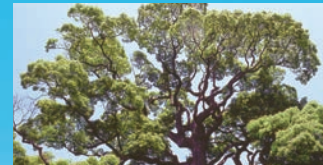
## 5<sup>th</sup> in Japan

\*Survey by Hyogo Prefectural Government

Prefectural flag



Prefectural tree: Camphor



Prefectural flower: Wild Chrysanthemum

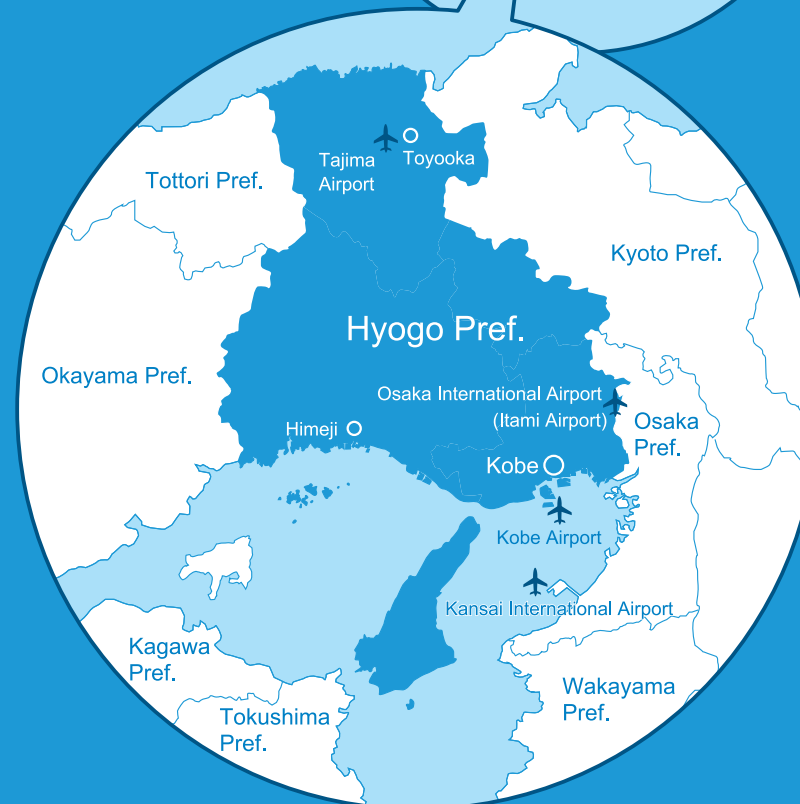
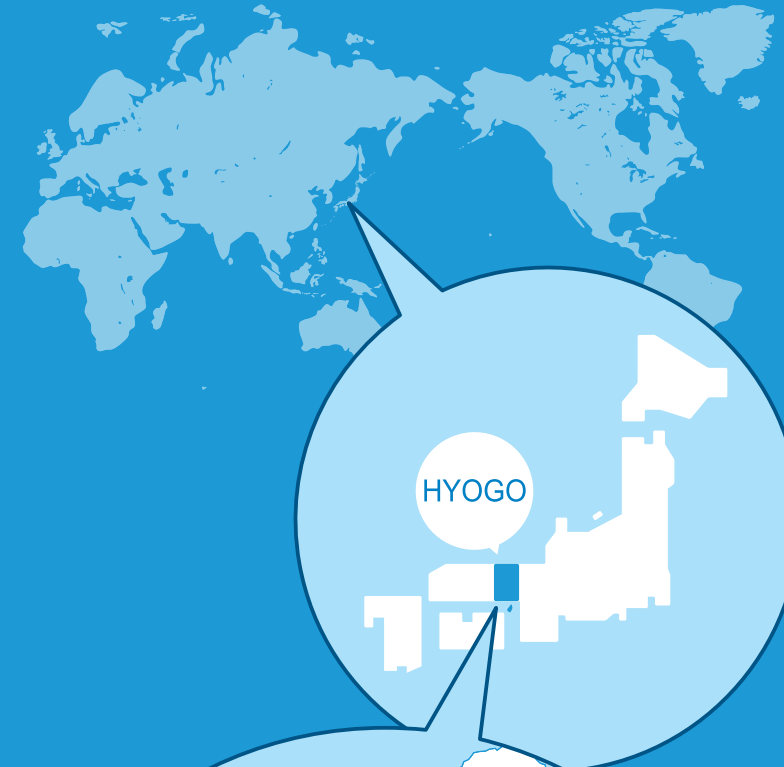


Prefectural bird: Oriental White Stork



## Location

Hyogo Prefecture is located almost in the center of Japan. It has excellent transportation access to railways, highways, ports, and airports. Major cities in Japan can be reached within 3 hours. Hyogo is also connected to countries around the world.



# derstand Hyogo Prefecture



International Affairs Division  
Industry, Employment & International Affairs Department  
Hyogo Prefectural Government  
Phone: +81-(0)78-362-3026  
Email: kokusaika@pref.hyogo.lg.jp

Hyogo Prefecture  
Official Website



Multilingual  
Pamphlet







# 01 Tourism & Special Products

Hyogo is blessed with a diverse natural environment, such as the seas, mountains, and islands. In each district, visitors can experience its unique history, food, special products, scenery, and traditions.

## 📍 Settsu (Kobe/Hanshin)

The Kobe area is full of allure with open waterfront with many landmarks, mountains commanding magnificent views, and historical onsen hot springs. In the neighboring Hanshin area, high-quality modern architecture, arts, and culture have taken root. There are many restaurants serving premium Kobe Beef as well as popular confectionery shops.

## 📍 Harima

With Himeji Castle (a World Heritage Site), Akashi Castle, and the ruins of Ako Castle known for Chushingura (47 Ronin), the district features historical castle towns. Oysters, Ako's salt and Akashi's sea bream are some of the bountiful blessings of the Seto Inland Sea. Harima is where Yamada-nishiki sake rice and the Banshu-ori textile (yarn-dyed fabric) come from, and together they make the district a place full of allure and variety.

## 📍 Tajima

Mt. Hyonoson, the highest peak in Hyogo, and the Sea of Japan offer opportunities for outdoor activities throughout the year. Snow crab and squid fishing is a prosperous industry in the district. Traditional handcrafts, such as Izushi-yaki porcelain and Toyooka Willow Basketry, have been passed down through the ages.

## 📍 Tamba

Tamba, with its clear air and rich nature, is full of beautiful traditional countryside scenery. The rich natural environment provides chestnuts, black soybeans, adzuki beans, Japanese yam, and wild boar meat for the "Botan-nabe" dish, all of which are famous around Japan. Tamba-yaki pottery with its long history is a typical Japanese traditional handcraft.

## 📍 Awaji

Awaji, an island featuring mild climate and magnificent natural beauty that includes the beautiful sunset seen from the road Awaji Sunset Line and the world's biggest whirlpools, is also famous for its flowers of each season. Awaji is a treasure trove of fresh foods, from seafood to livestock products, vegetables, and fruits.



# 03 SDGs

It is important to pass on to the next generation a society that will give hope to everyone. In cooperation with diverse entities, such as businesses, organizations, and educational facilities, Hyogo is promoting the SDGs (Sustainable Development Goals) as a prefecture-wide effort.

## Main Projects

### Hyogo Field Pavilion

Using the opportunity of the Expo 2025 Osaka, Kansai, Hyogo will use its unique and distinctive districts (the field of activities), where Hyogo's original SDG-related activities are being undertaken, for the Hyogo Field Pavilion project to organize learning and experience-based programs.

### SDGs CHALLENGE

For startups trying to solve world-scale SDG issues, Hyogo supports them in developing and expanding businesses overseas by providing accelerator programs as well as mentoring and networking services.



Courtesy of HySTRA



See here for details



Hyogo Prefecture  
Official Tourism  
Guide

Hyogo Prefecture  
Tourism PR  
Video

Courtesy of RIKEN



Courtesy of Kobe Shimbun (newspaper)



# 02 Next-generation Industries

See here for details



Hyogo Prefecture  
Foreign Direct  
Investment Guide

Hyogo-Kobe  
Investment Support  
Center PR Video

In Hyogo, the Harima Science Garden City, Kobe Biomedical Innovation Cluster, and the supercomputer Fugaku create the world's most advanced foundation for scientific technology. Making use of Japan's leading geographical advantages, such as having an airport built on the sea and an internationally strategic port, Hyogo aims to be a leader at home and abroad through the industry-academia-government collaboration in the growing fields of new-generation technology: aircraft, robotics, healthcare/medicine, and environment/energy.

## Mobility

Hyogo plans to put into practical use new forms of transport, such as the "flying car," latest drones, and super-small EVs, as the new generation of mobility and provide new services to solve social problems.

## Healthcare/Medicine

Kobe Biomedical Innovation Cluster is a hub where RIKEN, universities, advanced research institutes, and highly specialized hospitals gather. Development of world-class revolutionary medical technology is in progress, including "hinotori™," the nation's first surgical support robot.

## Hydrogen energy

Hydrogen is considered to be the key for the realization of decarbonization, stable energy supply, and creation of new economic vitality. Using each region's potential, Hyogo is working to create a "hydrogen society" that utilizes hydrogen in everyday life and industrial activities.

### Each Region's Potential

#### Kobe/Hanshin Region, an urban area where people and businesses are concentrated

The region is an advanced hydrogen promotion area where leading projects are being implemented, including successful demonstration tests of liquefied hydrogen carrier between Japan and Australia and power generation using 100% hydrogen fuel in urban areas.

#### Harima Coastal Region, a hub of energy industries, etc.

The region is one of the nation's leading manufacturing centers and is home to energy-intensive industries such as power generation, steel, and chemicals. The goal is to create a hydrogen supply-chain base centered around Himeji Port.

#### Awaji Island, an energy-independent island

Awaji Island is working to promote a model of local production for local consumption of energy, using its rich renewable energy sources such as sunlight, wind, and biomass to produce, store, and use hydrogen energy.

#### Tajima/Tamba Region, rich in tourism resources

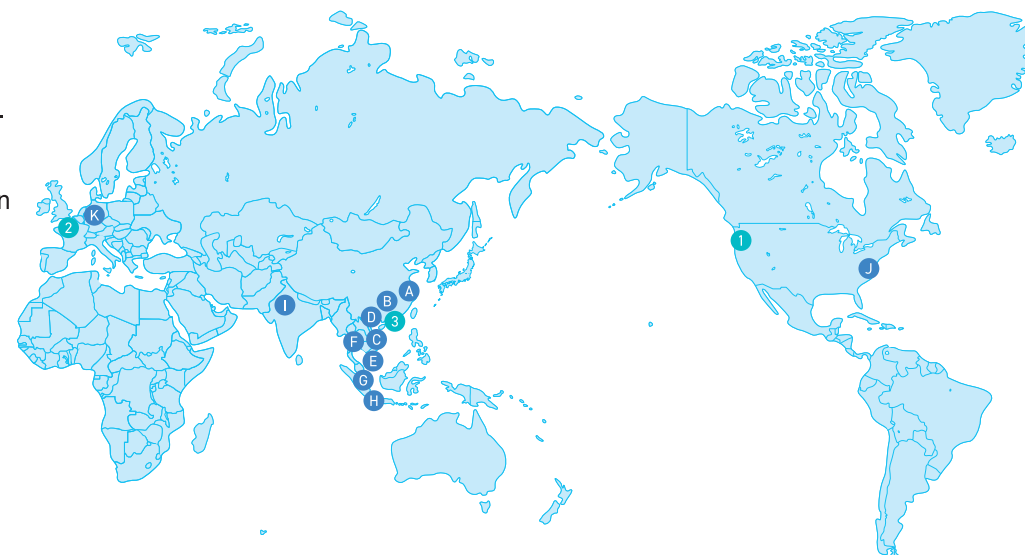
The use of sightseeing buses and trains equipped with fuel cells, which produce electricity by a chemical reaction of hydrogen and oxygen, is being studied to promote initiatives that combine tourism and hydrogen.

# 04 International Exchange

Since the opening of the Port of Kobe in 1868, Hyogo Prefecture has been a leader in the internationalization of Japan. International schools, hospitals offering multilingual services, daily life consultation organizations, religious facilities, etc. create an environment where foreign residents can feel safe and comfortable to live. At present, there are about 110,000 foreign residents from about 150 countries living in Hyogo.

## Economic/Business Exchange

Hyogo Prefecture has established overseas offices (3 locations) and Hyogo International Business Support Desks (11 locations) around the world to promote international economic and business exchange. Hyogo is one of Japan's leading prefectures in terms of the number of foreign/foreign-affiliated companies and the number of local companies expanding overseas.



### Overseas Offices

- 1 Washington State (USA)
- 2 Paris (France)
- 3 Hong Kong (China)

### Hyogo International Business Support Desks

- A Shanghai (China)
- B Guangzhou (China)
- C Viet Nam
- D Hanoi (Viet Nam)
- E Ho Chi Minh (Viet Nam)
- F Bangkok (Thailand)
- G Singapore
- H Jakarta (Indonesia)
- I Delhi (India)
- J New York (USA)
- K Germany