

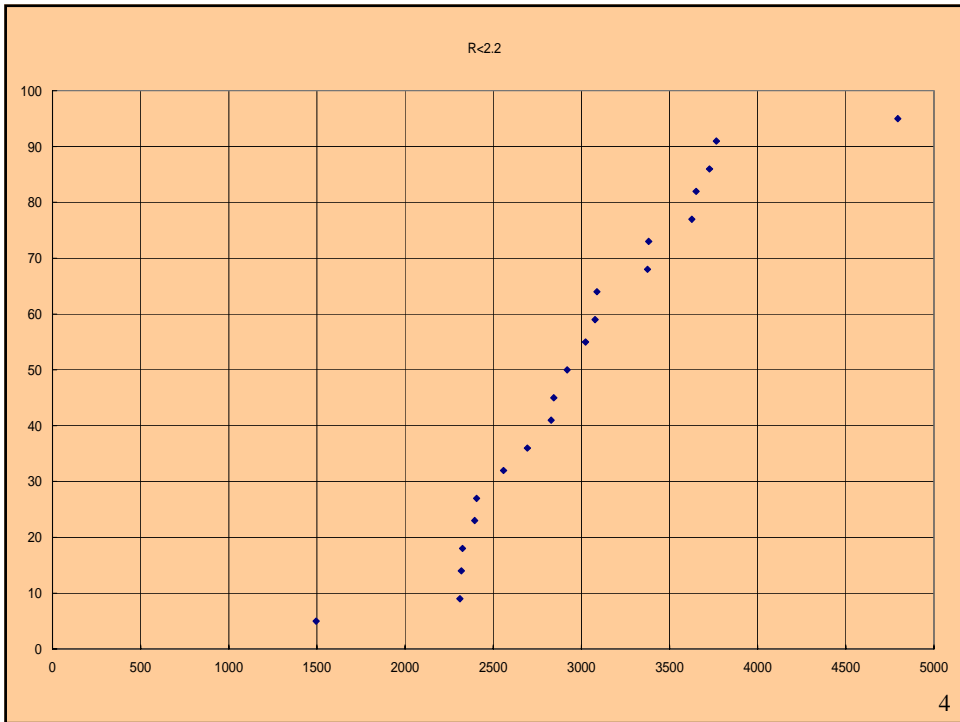
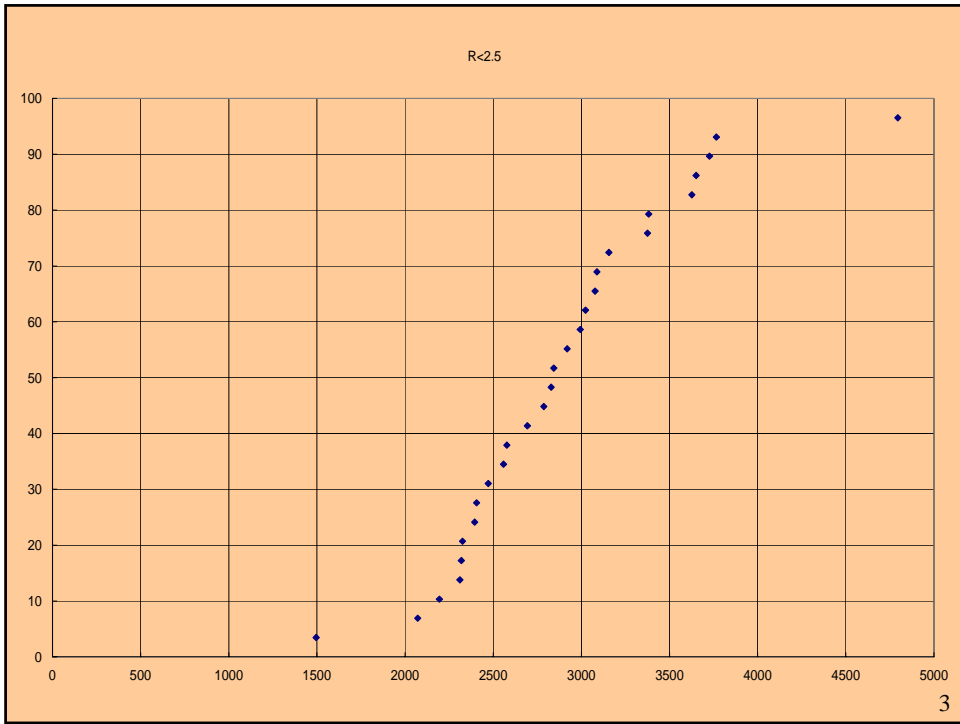
第13回流域委員会資料2-4による
引き伸ばし率ランクによるピーク流量
分布グラフ

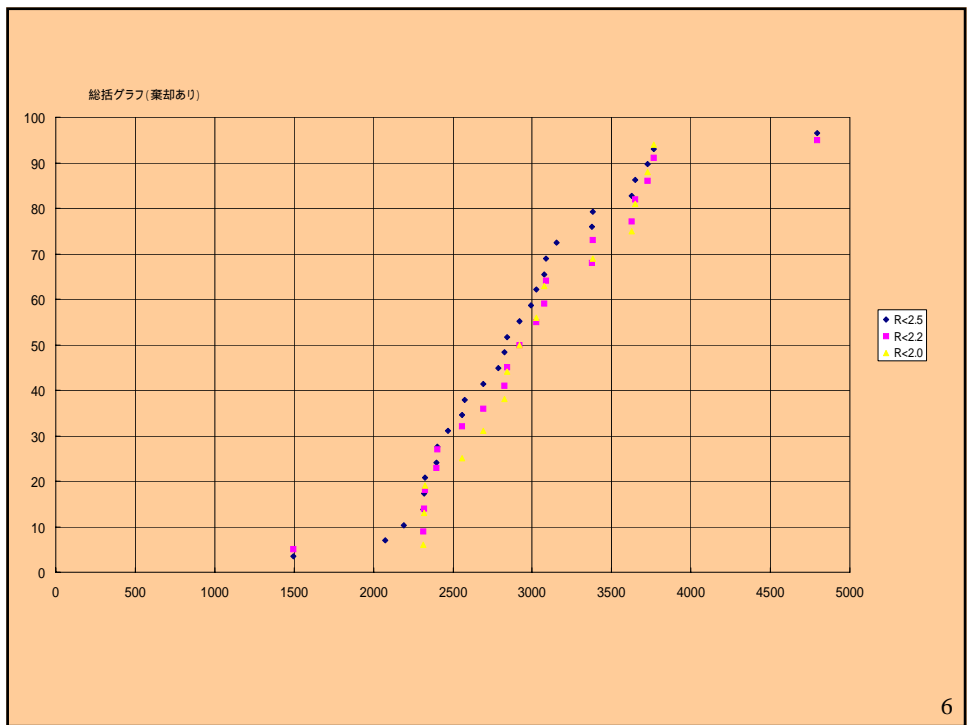
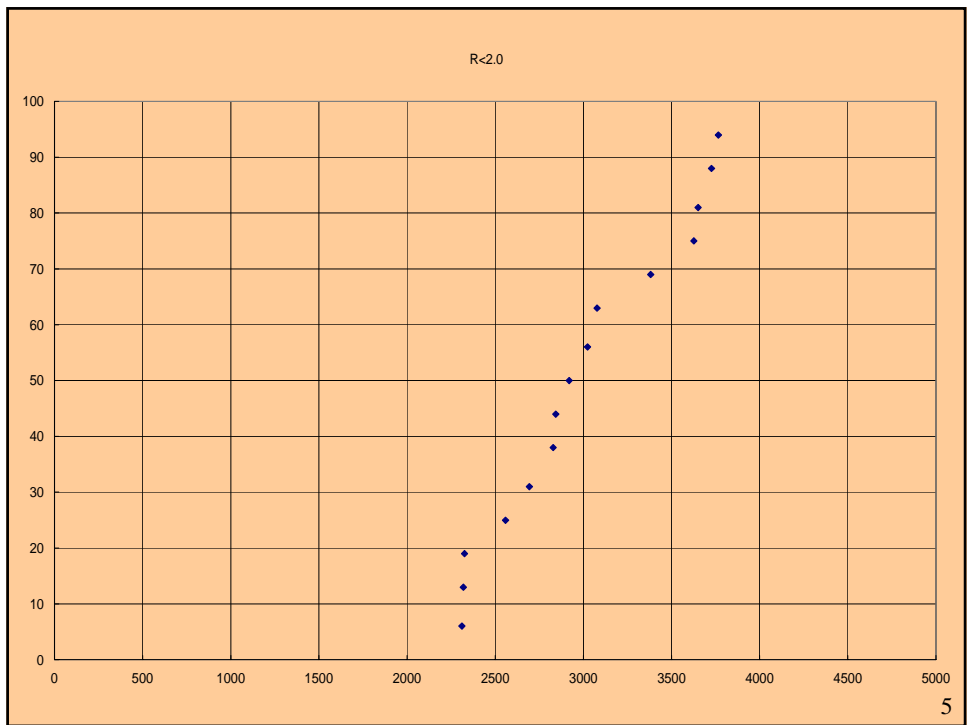
R<2.5, R<2.2, R<2.0

作図：奥西一夫

県の基準で棄却を行ったあとのピーク流量

| 年月日 | ピーク流量カバー率 | 引伸率 | 棄却 | ピーク流量 | カバー率 | ピーク流量 | カバー率 |
|------------|---------------|-------|----|-------|-------|-------|------|
| | R<2.5 | R | | R<2.2 | R<2.0 | | |
| 1981/6/19 | 1496 3.448276 | 2.106 | | 1496 | 5 | | |
| 1967/10/26 | 2072 6.896552 | 2.29 | | | | | |
| 1971/8/28 | 2194 10.34483 | 2.264 | | | | | |
| 1965/5/25 | 2311 13.7931 | 1.761 | | 2311 | 9 | 2311 | 6 |
| 1965/9/12 | 2319 17.24138 | 1.208 | | 2319 | 14 | 2319 | 13 |
| 1995/5/10 | 2325 20.68966 | 1.583 | | 2325 | 18 | 2325 | 19 |
| 2000/9/10 | 2395 24.13793 | 2.092 | | 2395 | 23 | | |
| 1961/10/26 | 2405 27.58621 | 2.164 | | 2405 | 27 | | |
| 1969/6/28 | 2471 31.03448 | 2.21 | | | | | |
| 1957/6/25 | 2558 34.48276 | 1.611 | | 2558 | 32 | 2558 | 25 |
| 2000/10/31 | 2577 37.93103 | 2.32 | | | | | |
| 1988/6/1 | 2693 41.37931 | 1.732 | | 2693 | 36 | 2693 | 31 |
| 1976/8/7 | 2786 44.82759 | 2.246 | | | | | |
| 1960/8/28 | 2828 48.27586 | 1.036 | | 2828 | 41 | 2828 | 38 |
| 1989/9/1 | 2844 51.72414 | 1.785 | | 2844 | 45 | 2844 | 44 |
| 1999/6/23 | 2919 55.17241 | 1.317 | | 2919 | 50 | 2919 | 50 |
| 2003/8/13 | 2993 58.62069 | 2.364 | | | | | |
| 1972/7/9 | 3023 62.06897 | 1.596 | | 3023 | 55 | 3023 | 56 |
| 1998/10/13 | 3077 65.51724 | 1.812 | | 3077 | 59 | 3077 | 63 |
| 1966/9/16 | 3088 68.96552 | 2.033 | | 3088 | 64 | | |
| 1959/8/7 | 3156 72.41379 | 2.235 | | | | | |
| 1965/9/18 | 3375 75.86207 | 2.193 | | 3375 | 68 | | |
| 1983/9/26 | 3381 79.31034 | 1.173 | | 3381 | 73 | 3381 | 69 |
| 1961/6/23 | 3626 82.75862 | 1.668 | | 3626 | 77 | 3626 | 75 |
| 1982/7/28 | 3650 86.2069 | 1.932 | | 3650 | 82 | 3650 | 81 |
| 1967/7/8 | 3726 89.65517 | 1.601 | | 3726 | 86 | 3726 | 88 |
| 1962/6/8 | 3765 93.10345 | 1.650 | | 3765 | 91 | 3765 | 94 |
| 1959/9/25 | 4794 96.55172 | 2.188 | | 4794 | 95 | | |



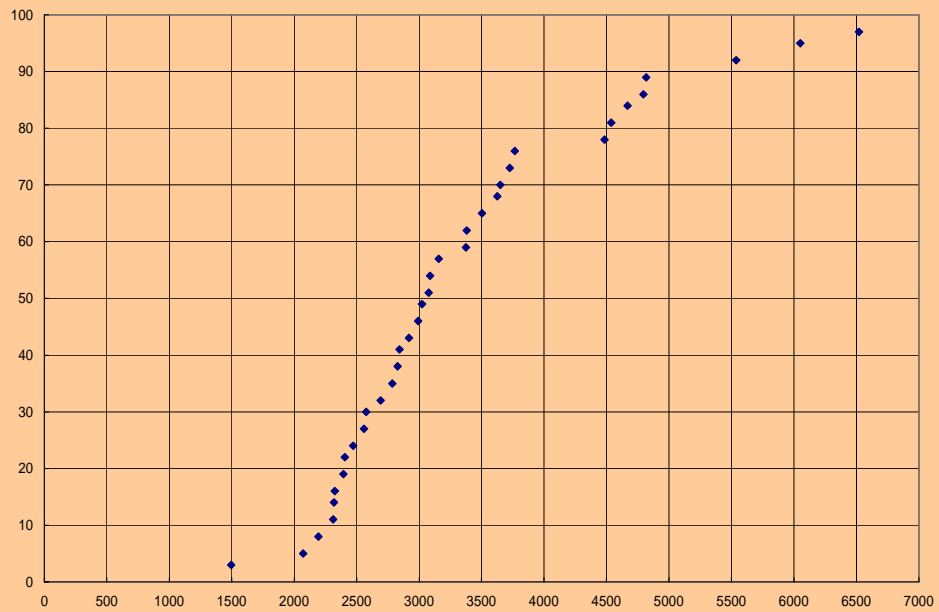


棄却を行わない場合のピーク流量

| | R<2.5 | R | | R<2.2 | | R<2.0 | |
|------------|---------|-------|------|-------|----|-------|----|
| 1983/6/19 | 1496.3 | 2.106 | | 1496 | 4 | | |
| 1967/10/26 | 2072.5 | 2.29 | | | | | |
| 1971/8/29 | 2194.8 | 2.264 | | | | | |
| 1965/5/25 | 2311.11 | 1.761 | | 2311 | 7 | 2311 | 5 |
| 1965/9/12 | 2319.14 | 1.208 | | 2319 | 12 | 2319 | 10 |
| 1995/5/10 | 2325.16 | 1.583 | | 2325 | 15 | 2325 | 15 |
| 2000/9/10 | 2395.19 | 2.092 | | 2395 | 19 | | |
| 1961/10/26 | 2405.22 | 2.164 | | 2405 | 23 | | |
| 1969/6/28 | 2471.24 | 2.21 | | | | | |
| 1957/6/25 | 2558.27 | 1.611 | | 2558 | 27 | 2558 | 20 |
| 2000/10/31 | 2577.30 | 2.32 | | | | | |
| 1988/6/1 | 2693.32 | 1.732 | | 2693 | 31 | 2693 | 25 |
| 1976/9/7 | 2786.35 | 2.246 | | | | | |
| 1960/8/28 | 2828.38 | 1.036 | | 2828 | 35 | 2828 | 30 |
| 1989/9/1 | 2844.41 | 1.785 | | 2844 | 38 | 2844 | 35 |
| 1999/6/23 | 2919.43 | 1.317 | | 2919 | 42 | 2919 | 40 |
| 2003/8/13 | 2993.46 | 2.364 | | | | | |
| 1972/7/9 | 3023.49 | 1.596 | | 3023 | 46 | 3023 | 45 |
| 1998/10/13 | 3077.51 | 1.812 | | 3077 | 50 | 3077 | 50 |
| 1966/9/16 | 3088.54 | 2.033 | | 3088 | 54 | | |
| 1959/8/7 | 3156.57 | 2.235 | | | | | |
| 1965/9/18 | 3375.59 | 2.193 | | 3375 | 58 | | |
| 1983/9/26 | 3381.62 | 1.173 | | 3381 | 62 | 3381 | 55 |
| 1996/8/26 | 3504.65 | 2.482 | 空間分布 | | | | |
| 1961/6/23 | 3626.68 | 1.668 | | 3626 | 65 | 3626 | 60 |
| 1982/7/28 | 3650.70 | 1.932 | | 3650 | 69 | 3650 | 65 |
| 1967/7/8 | 3726.73 | 1.601 | | 3726 | 73 | 3726 | 70 |
| 1962/6/8 | 3765.76 | 1.650 | | 3765 | 77 | 3765 | 75 |
| 1993/6/28 | 4484.78 | 2.428 | 時間分布 | | | | |
| 1969/6/24 | 4538.81 | 1.835 | 時間分布 | 4538 | 81 | 4538 | 80 |
| 2004/10/18 | 4669.84 | 1.379 | 時間分布 | 4669 | 85 | 4669 | 85 |
| 1959/9/25 | 4794.86 | 2.188 | | 4794 | 88 | | |
| 1972/9/15 | 4816.89 | 2.485 | 時間分布 | | | | |
| 1960/8/11 | 5538.92 | 2.410 | 時間分布 | | | | |
| 1998/9/21 | 6051.95 | 1.974 | 時間分布 | 6051 | 92 | 6051 | 90 |
| 1961/6/23 | 6519.97 | 1.835 | 時間分布 | 6519 | 96 | 6519 | 95 |

7

<2.5



8

