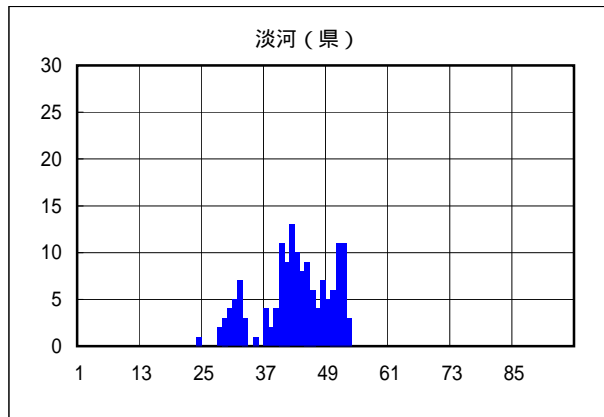
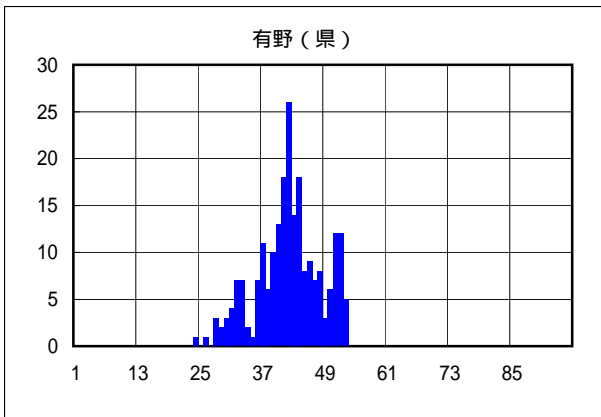
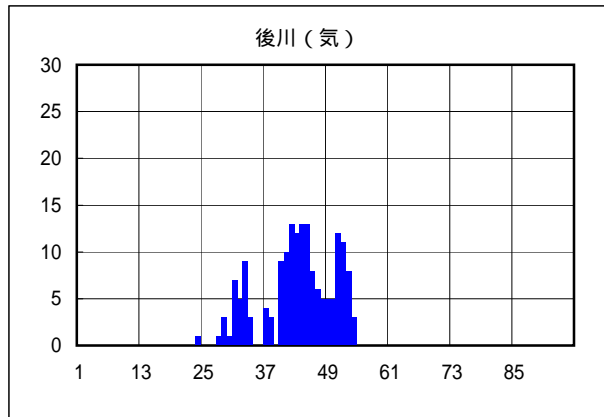
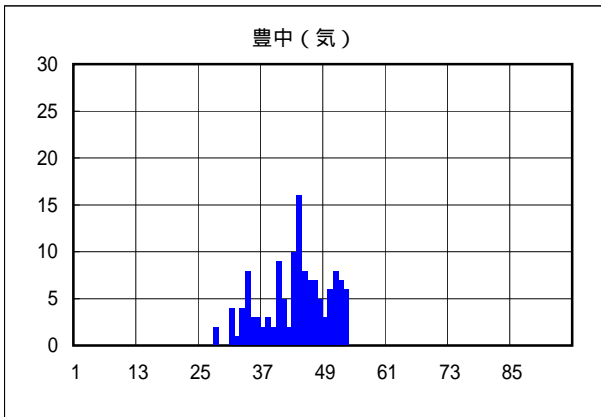
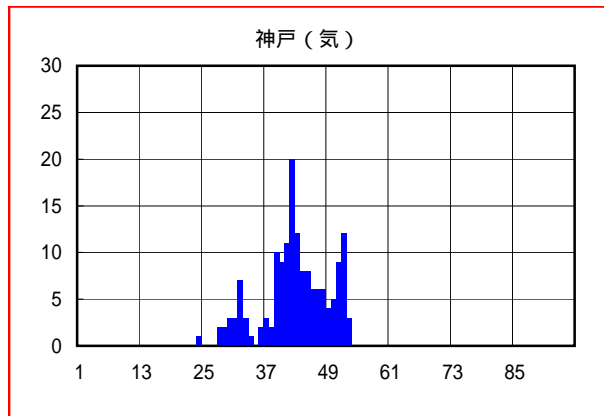
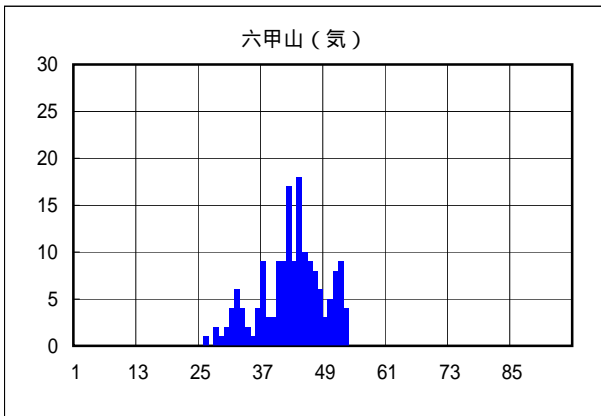
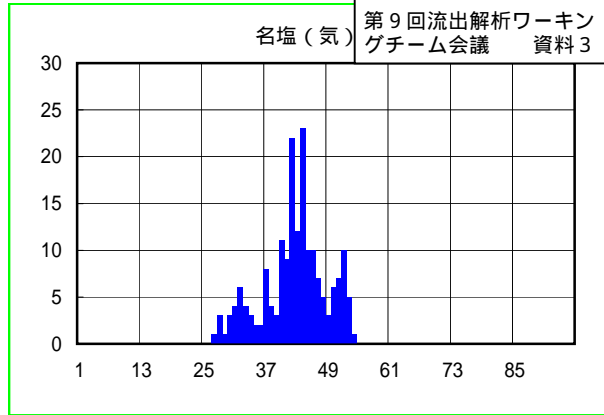
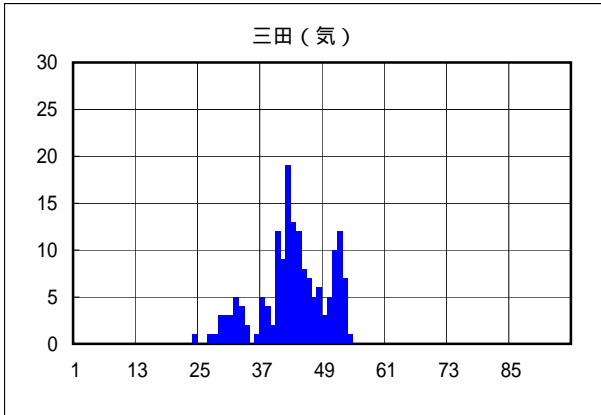


第19回流域委員会 資料2-4の補足資料

第20回流域委員会
資料2-2

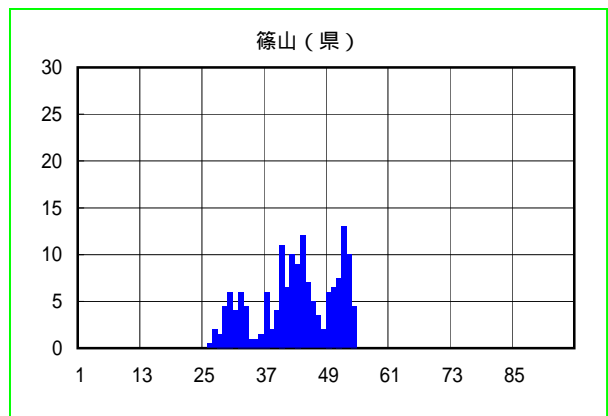
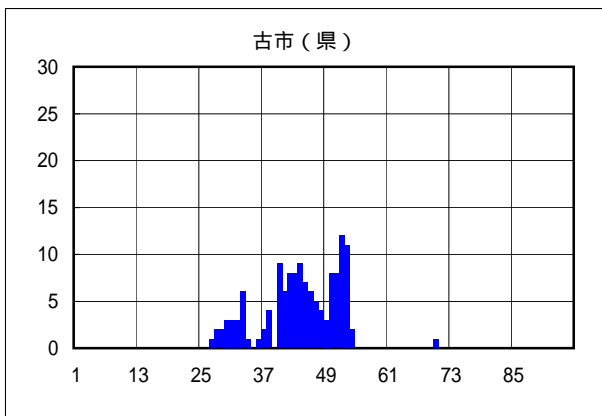
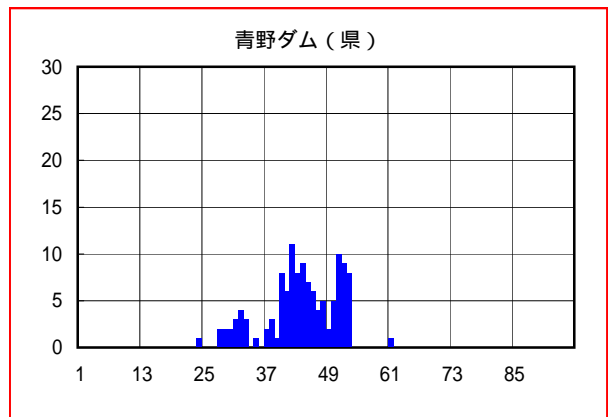
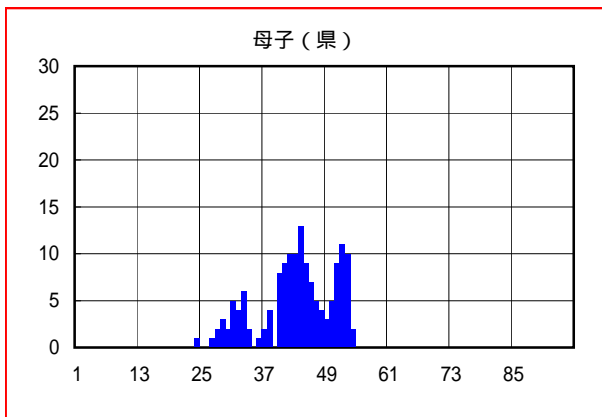
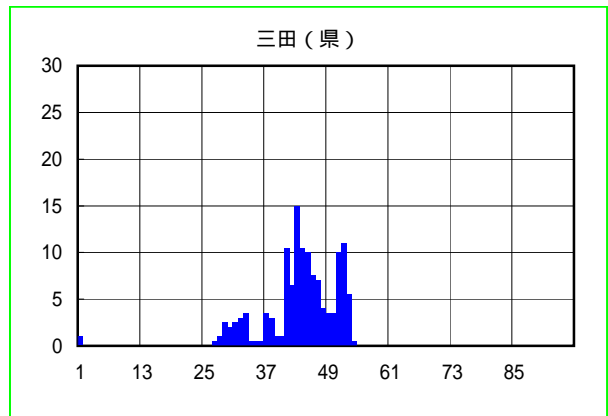
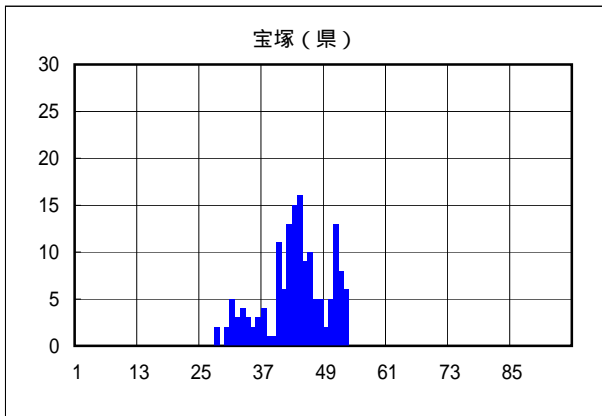
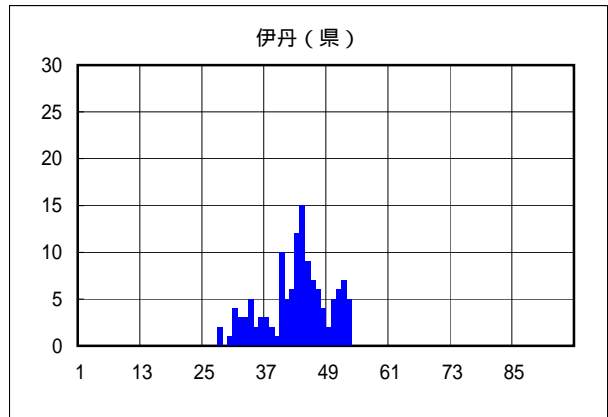
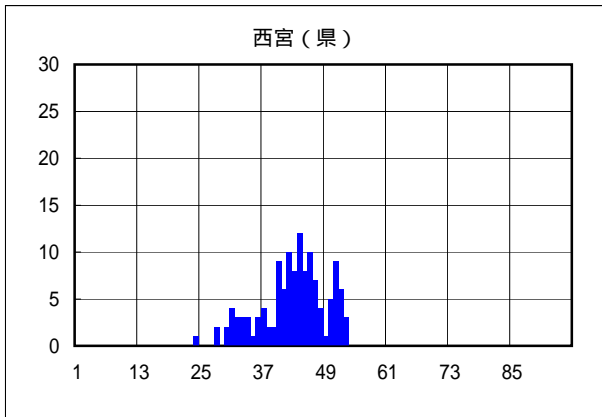
第9回流出解析ワーキング
グループ会議 資料3



H7.5.10洪水実績降雨波形(1)

赤色で囲ったものはS31～35の3観測所、これに緑色を加えたものがS36～41の6観測所である。

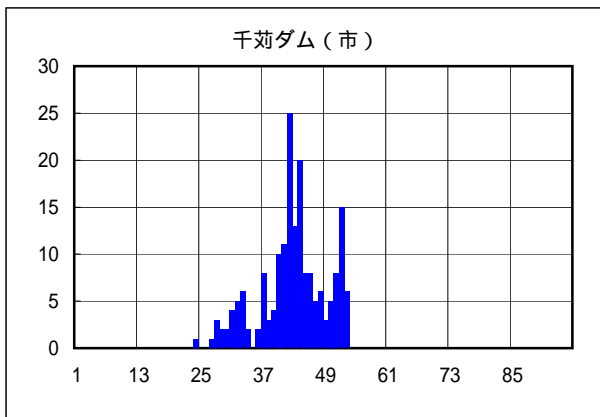
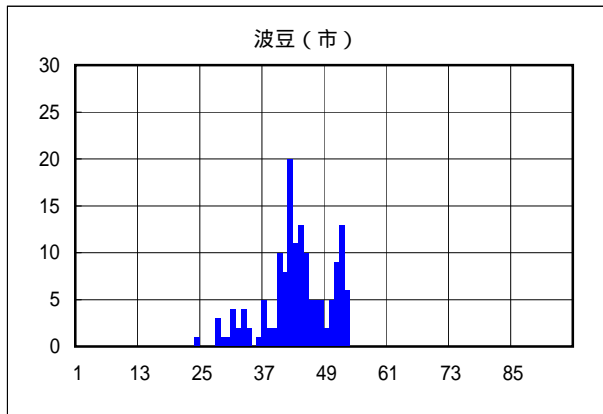
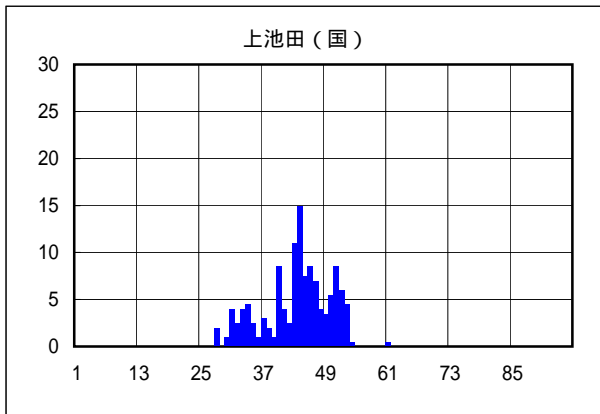
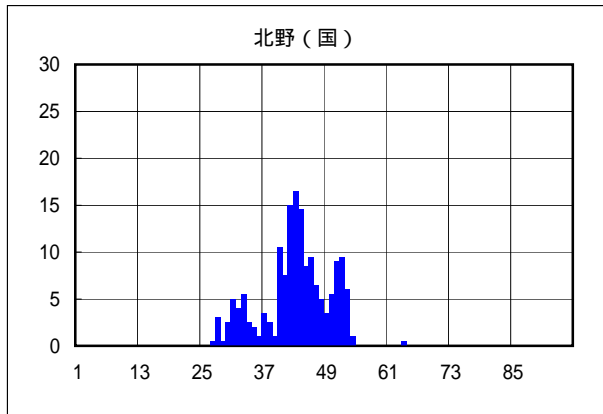
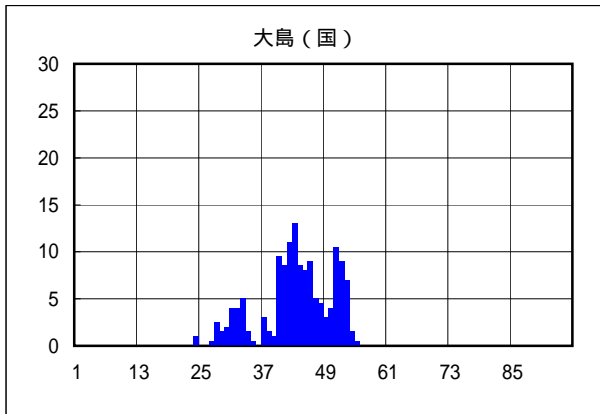
第19回流域委員会 資料2-4の補足資料



H7.5.10洪水実績降雨波形(2)

赤色で囲ったものはS31～35の3観測所、これに緑色を加えたものがS36～41の6観測所である。

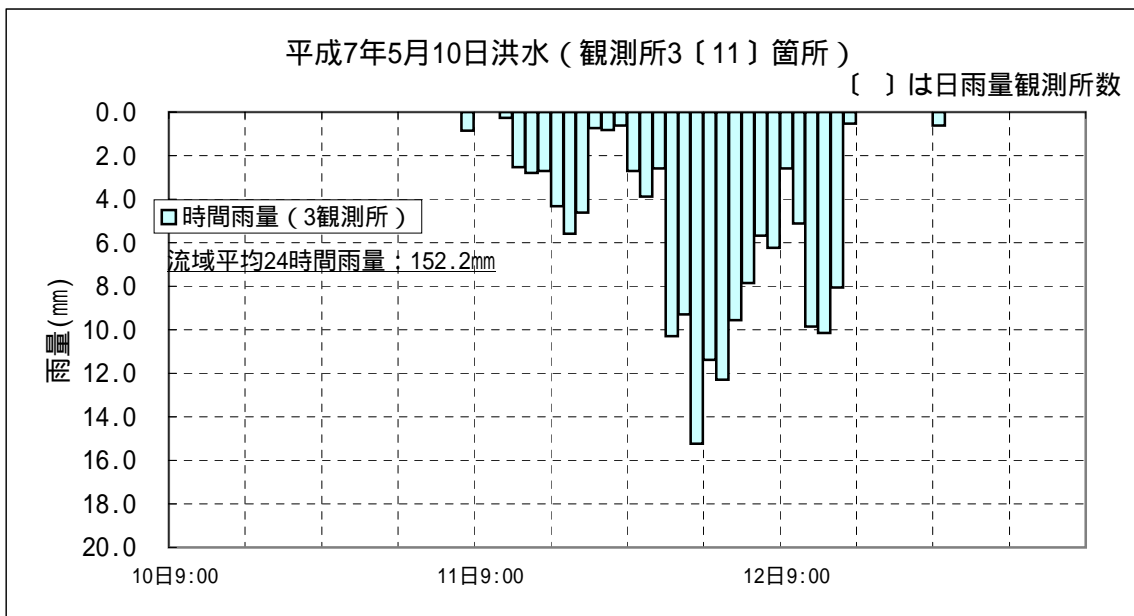
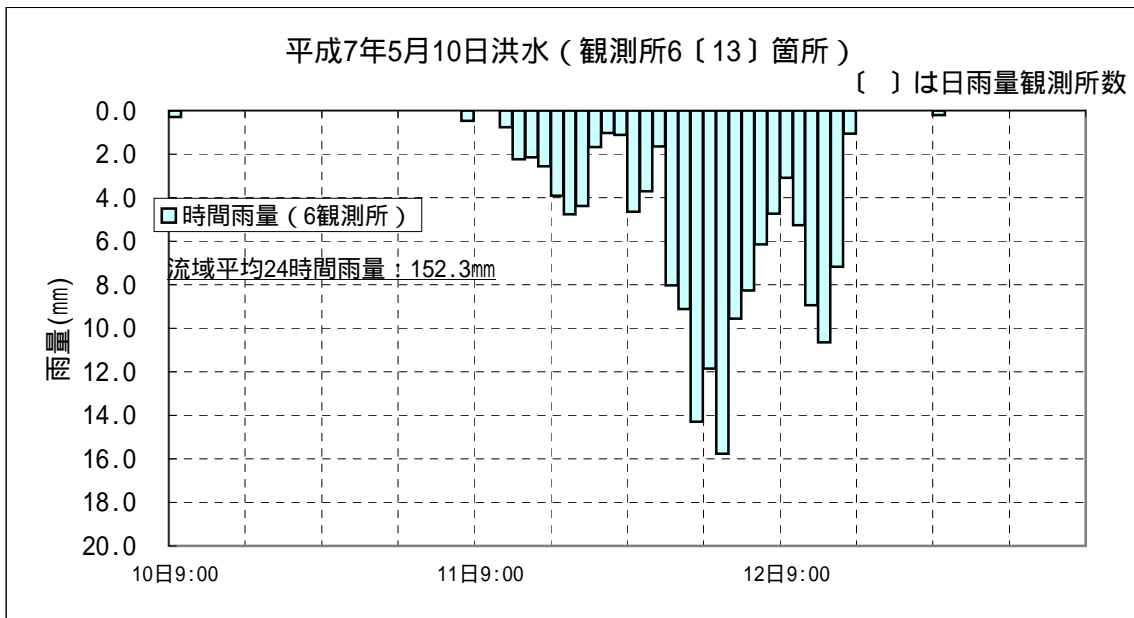
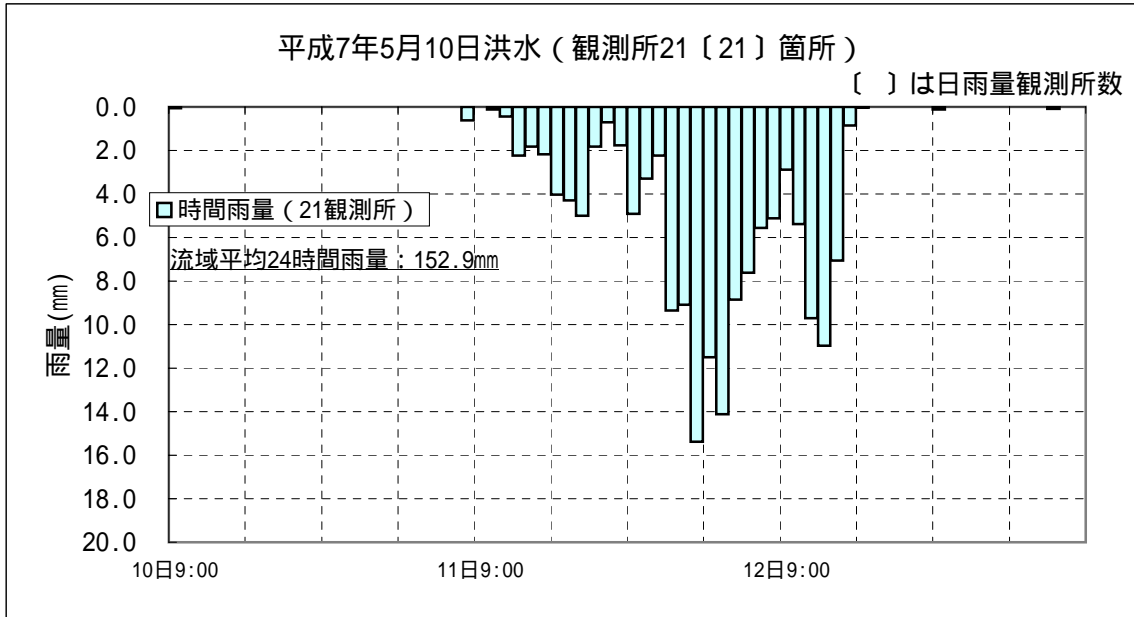
第19回流域委員会 資料2-4の補足資料



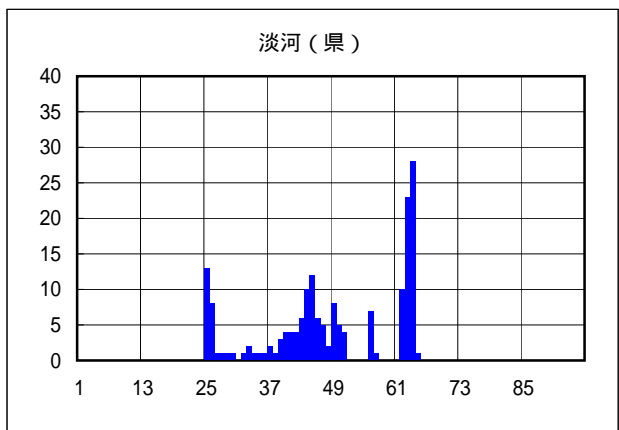
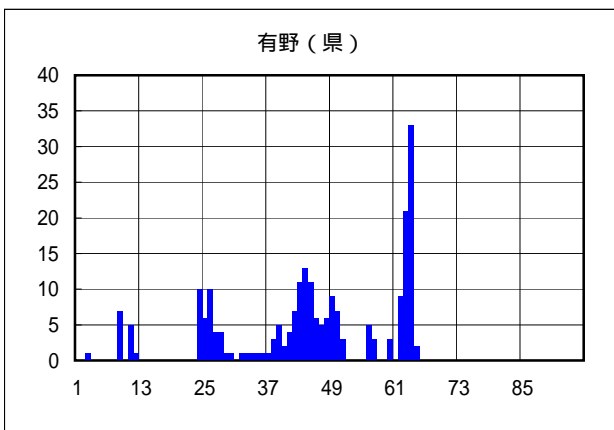
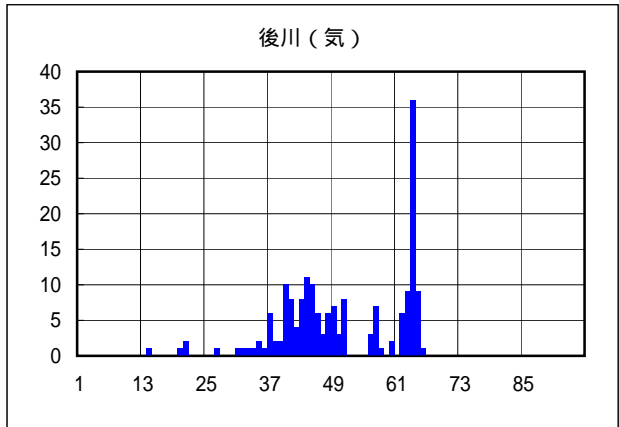
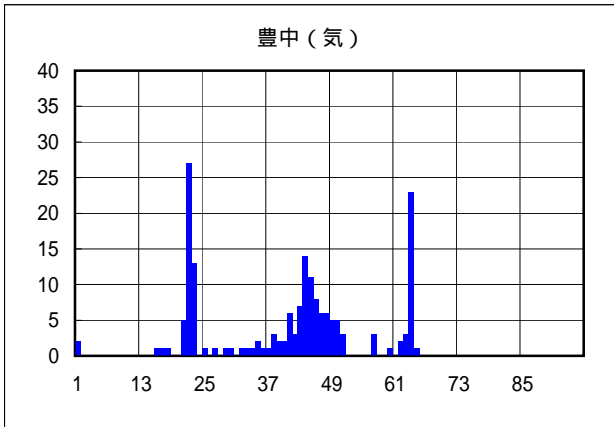
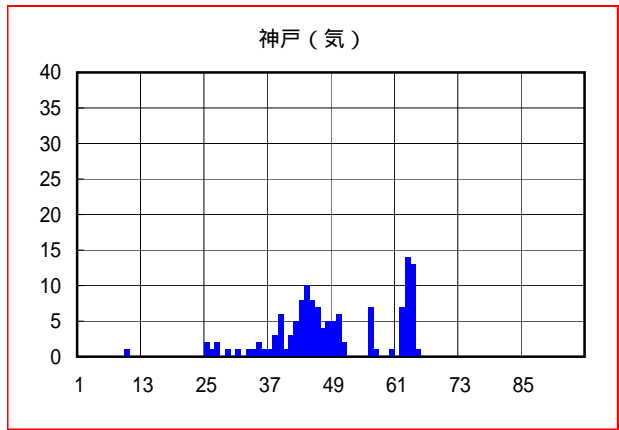
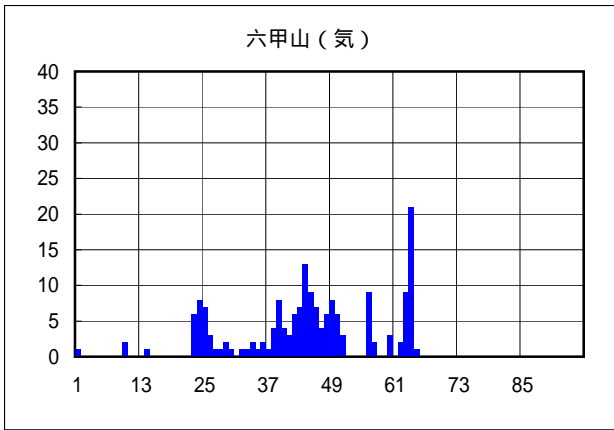
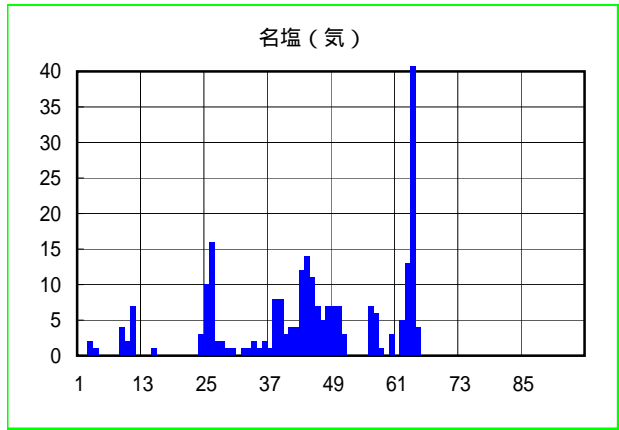
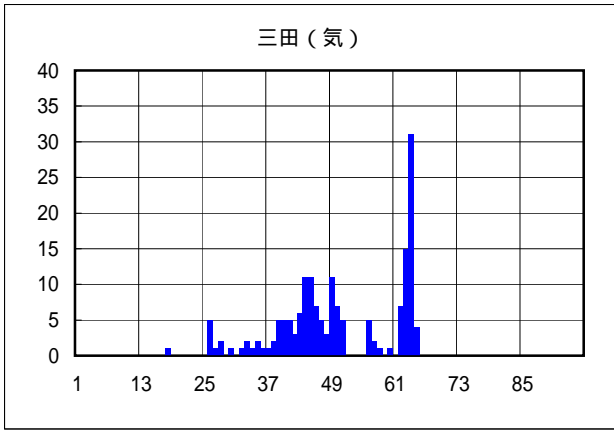
H7.5.10洪水実績降雨波形 (3)

赤色で囲ったものはS31～35の3観測所、これに緑色を加えたものがS36～41の6観測所である。

第19回流域委員会 資料2-4の補足資料

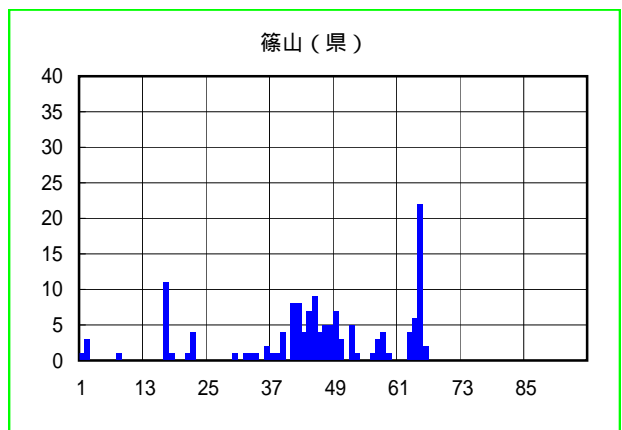
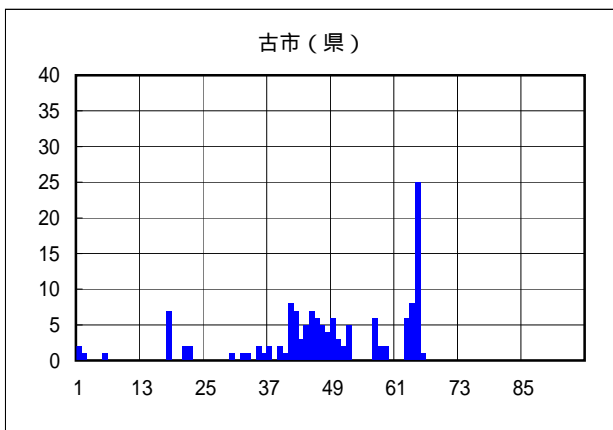
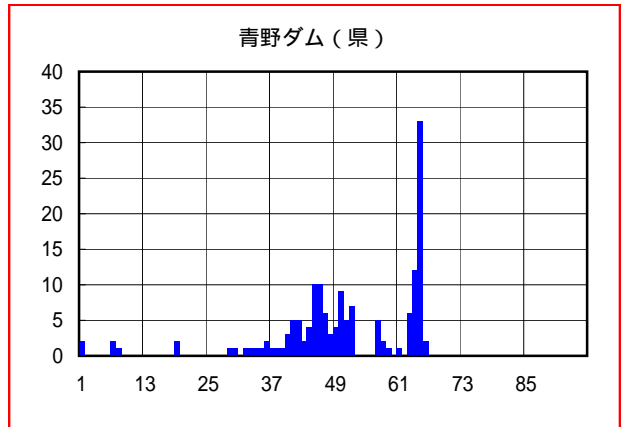
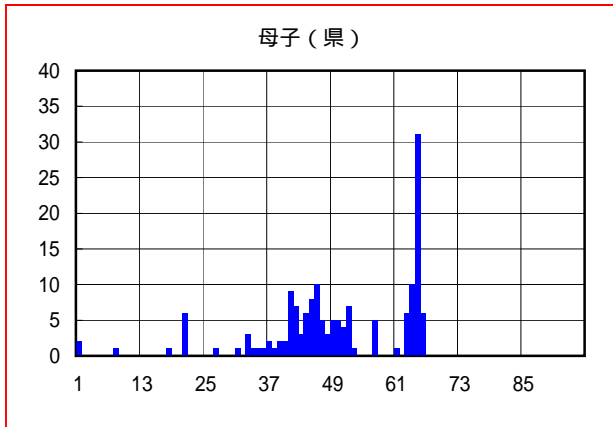
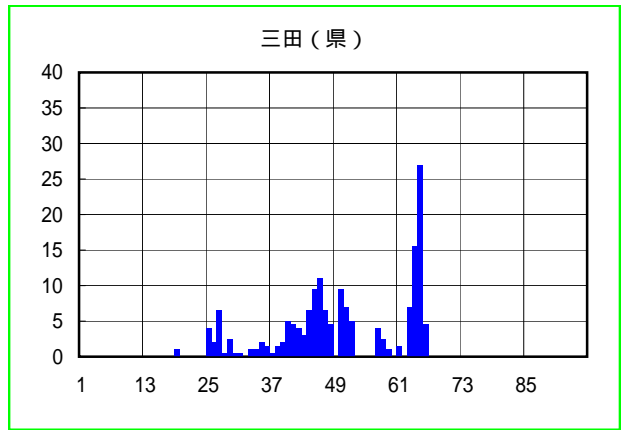
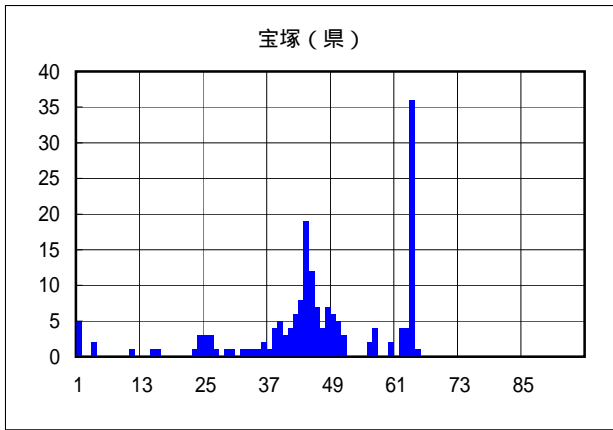
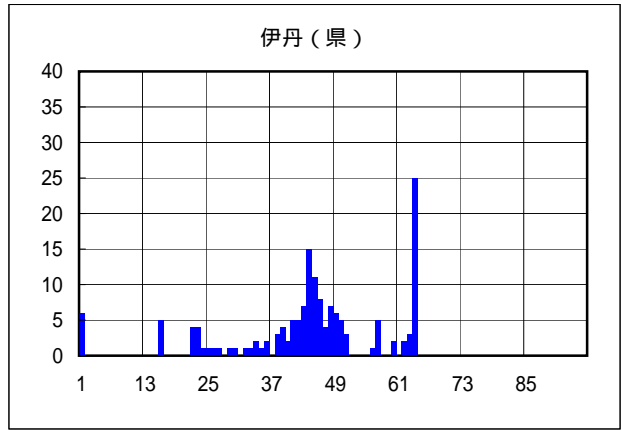
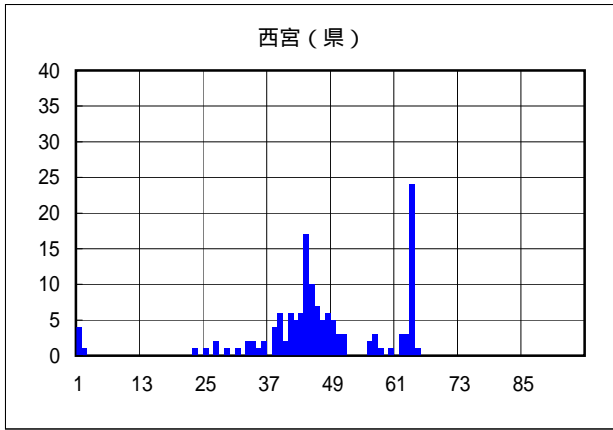


第19回流域委員会 資料2-4の補足資料



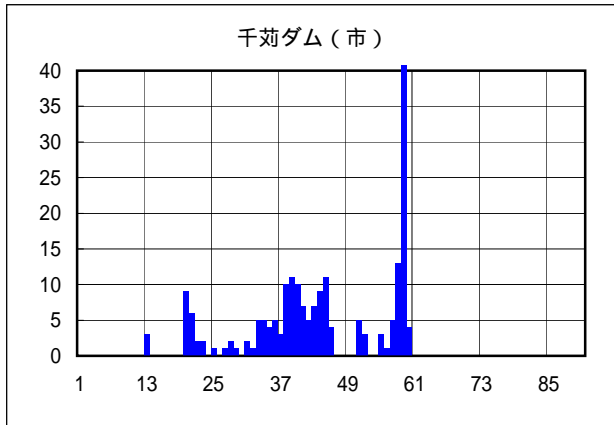
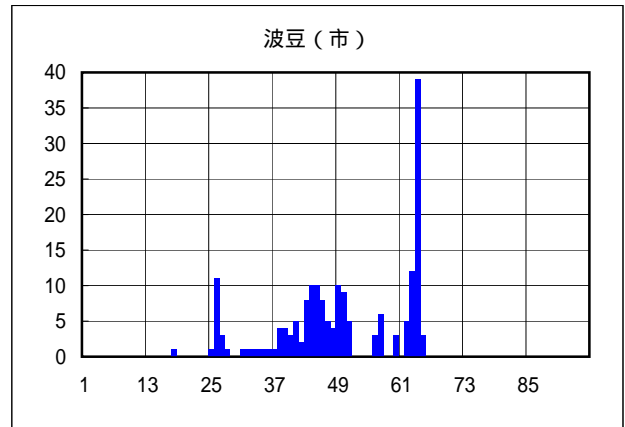
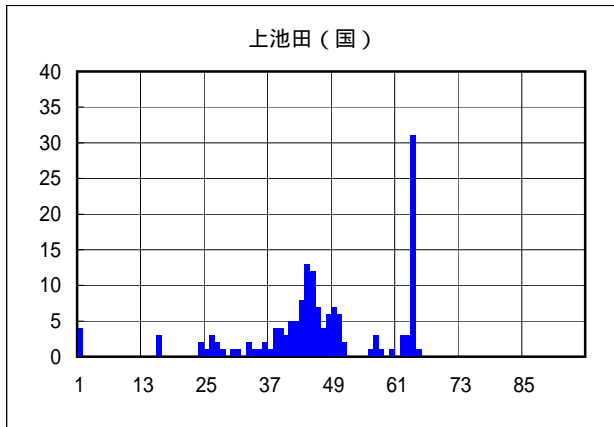
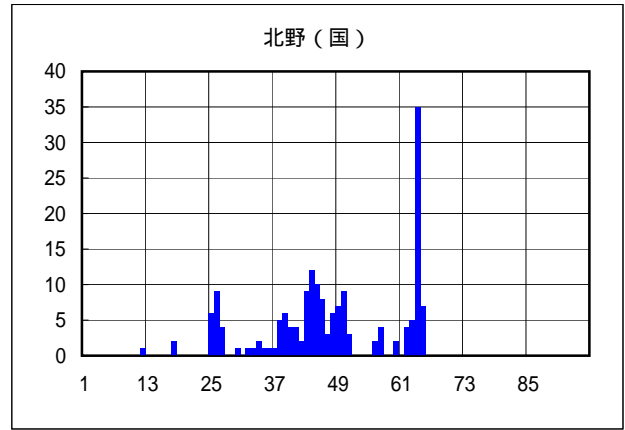
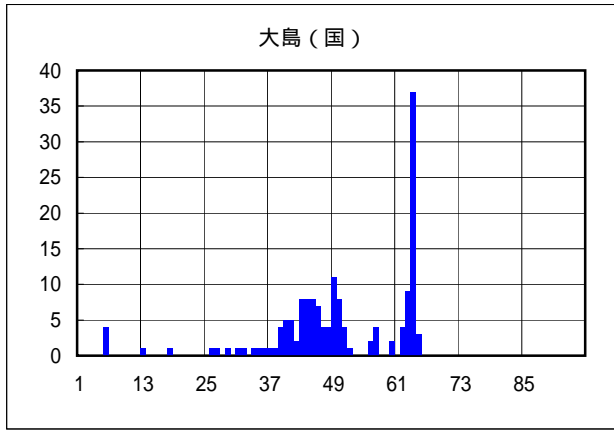
H10.10.13洪水実績降雨波形 (1)

第19回流域委員会 資料2-4の補足資料



H10.10.13洪水実績降雨波形(2)

第19回流域委員会 資料2-4の補足資料

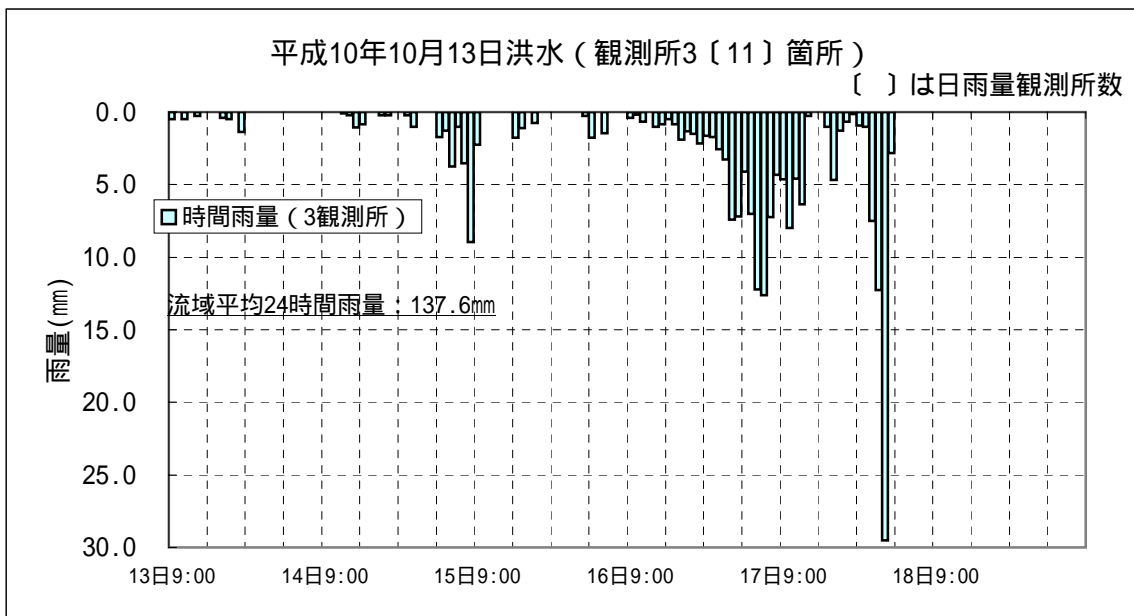
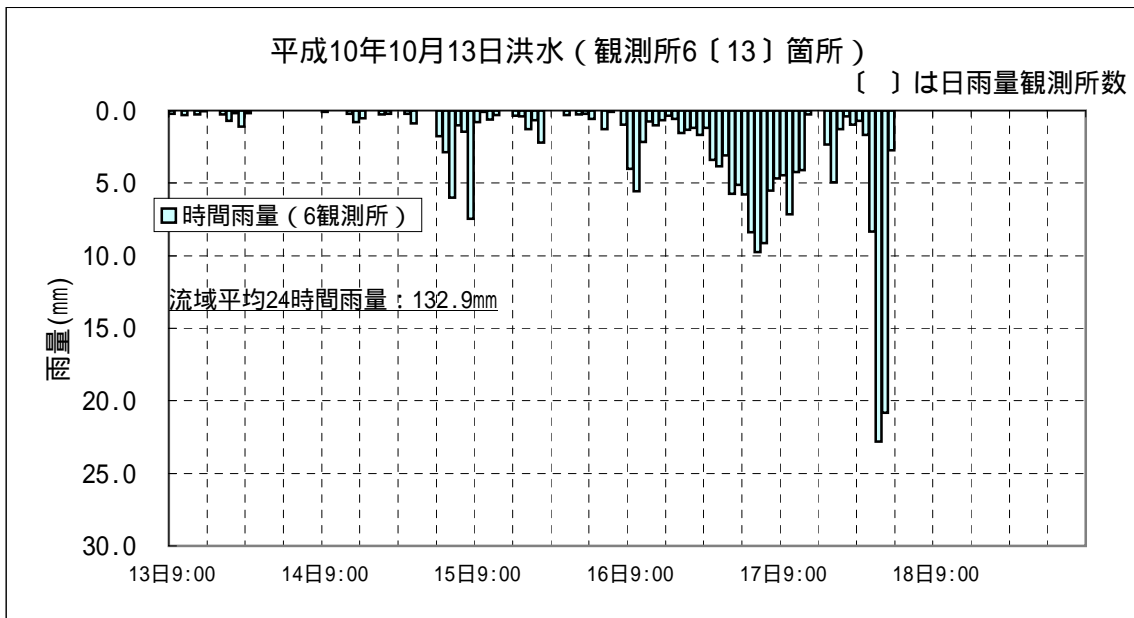
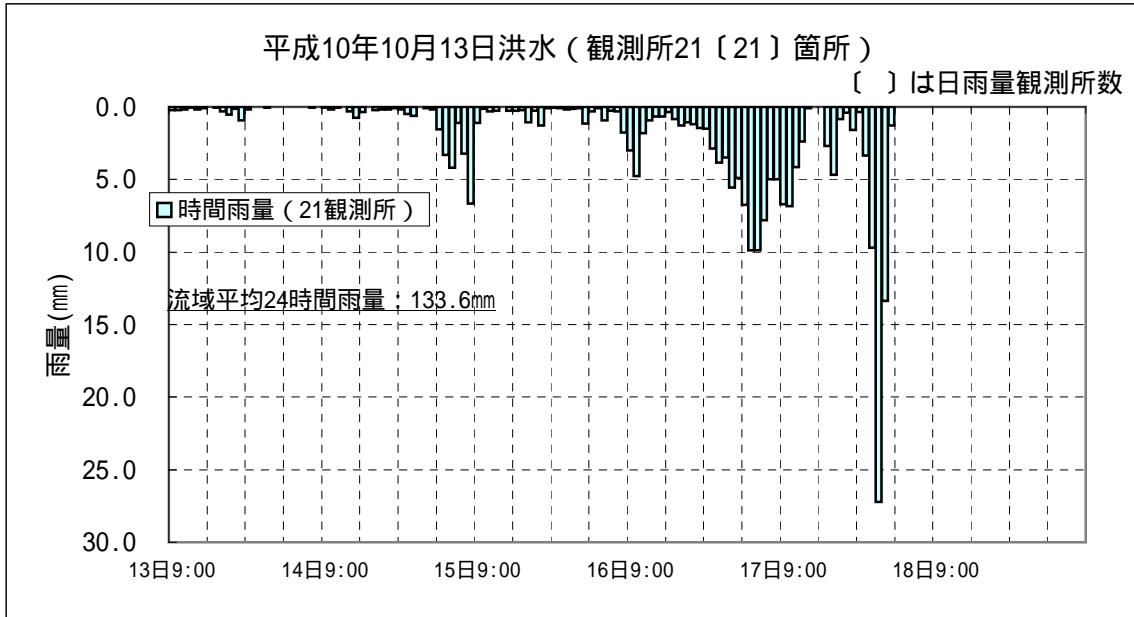


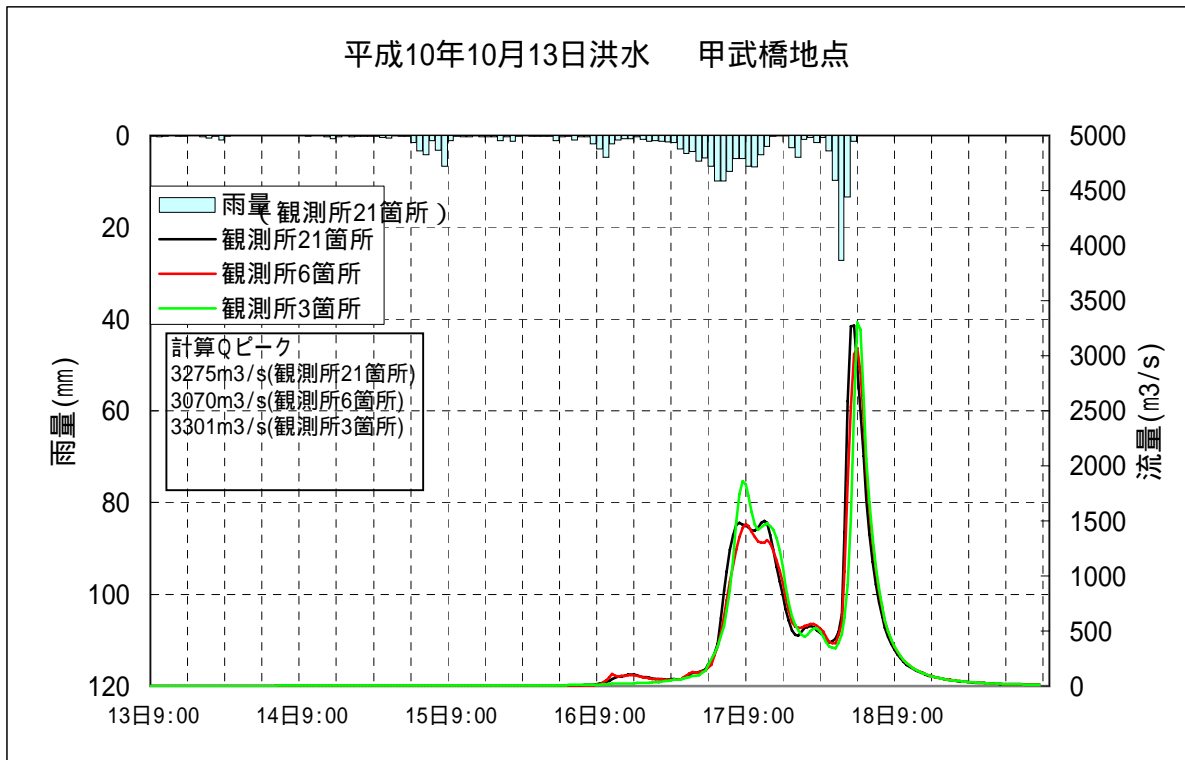
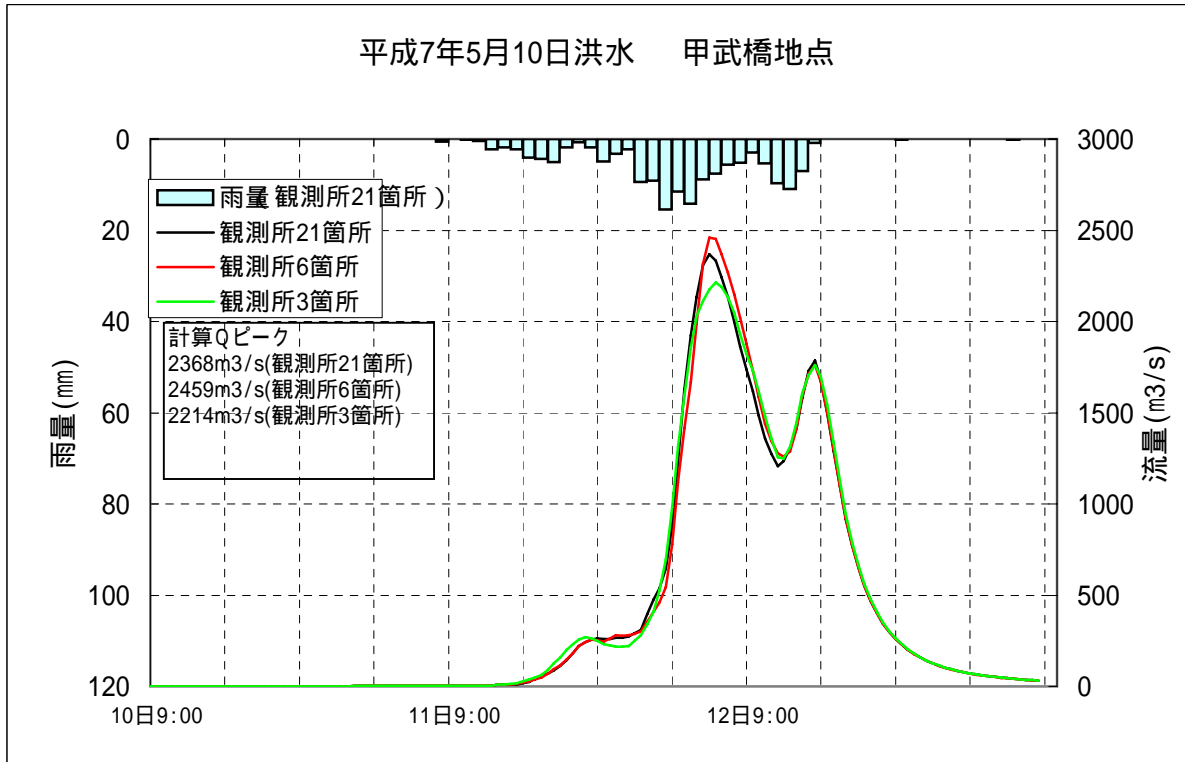
H10.10.13洪水実績降雨波形(3)

7/9

赤色で囲ったものはS31～35の3観測所、これに緑色を加えたものがS36～41の6観測所である。

第19回流域委員会 資料2-4の補足資料





流出計算に用いた各地目の計画飽和雨量 R_{sa} は、甲武橋地点での流域平均損失高を 4.0 mm として評価、設定した結果である。